

**Vol.
2025**

Gun Safe Catalog



Table of Contents

| | |
|--|-----------|
| RF Series (<i>TL-30 and TL-30X6</i>) | 5 |
| BFI Series | 6 |
| BFX Series | 7 |
| BFX and BFI Series (<i>continued</i>) | 8 |
| What is Drylight?/BFX and BFI Burglary Ratings Comparison | 9 |
| BFX Series (<i>continued</i>) | 10 |
| NF Series | 12 |
| SF Series | 13 |
| TF Series | 14 |
| AM Series | 15 |
| Jewelry Safe | 16 |
| FS Series and EST Series | 17 |
| Concealed Safe and Handgun Series | 18 |
| Vault Door Series | 19 |
| Stor-It Cabinets/The Safe Cloak | 20 |
| Locks/Other Options | 21 |
| Gun Safes At A Glance | 22 |



WE STAND BEHIND OUR CRAFTSMANSHIP WITH A “NO COST” LIFETIME WARRANTY AGAINST THEFT & FIRE



American Security® manufactures safes with the best fire and burglary protection in the industry. We’re so confident in our products, that we offer a lifetime warranty on all our gun safes. Our warranty covers:

- Burglaries – If your safe is forcibly entered, we will repair or replace it free of charge.
- Attempted Burglaries – If your safe undergoes a drill, punch or pry attack and is not breached, we will repair or replace it free of charge.
- Damage from a Home Fire – If your safe is damaged in a home fire, we will repair or replace it free of charge.

At no cost to you, we will either repair your damaged gun safe or replace it with a current production model of comparable value.¹



STANDARDIZED TESTING FROM INDEPENDENT LABORATORIES

American Security is one of the first manufacturers in the gun safe industry to use standardized test procedures from independent laboratories to substantiate our burglary and fire ratings. Standardized independent testing provides consistent test procedures that can be used across the industry so consumers can meaningfully compare ratings between different safes when making a purchasing decision.

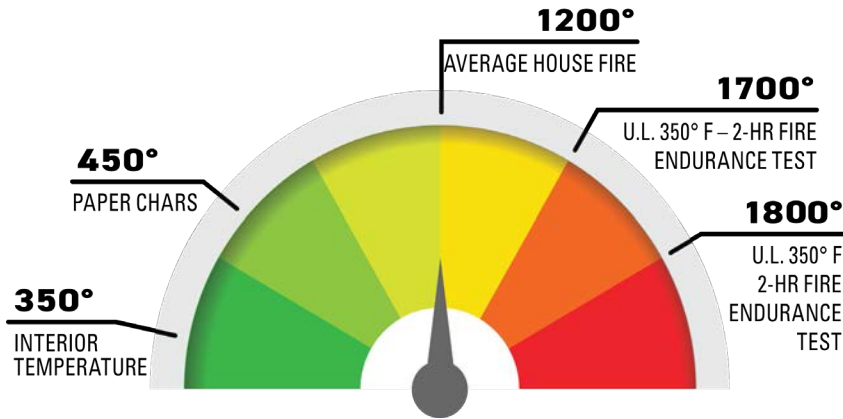
BURGLARY RATINGS

In the United States, the most recognized testing organization for burglary resistance of safes is Underwriters Laboratories (UL). UL publishes standards and administers tests to check if products meet those standards. Standards include specific tools that are used during a break-in attempt and a specific time limit for the test. There are several different burglary classifications that establish specific levels of attack resistance. The most common listing in the gun safe industry is Residential Security Container (RSC).



FIRE RATINGS

The ETL logo on our fire-rating labels indicates that our ratings have been verified by independent testing at Intertek Laboratories. Intertek is a multinational independent inspection, product testing and certification organization with over 38,000 employees in over 100 countries. To test our products, Intertek places our safes in a furnace with 8 gas burners. The test furnaces reach 1200°F in 8 minutes. That temperature is maintained for the duration of the test. Five separate thermocouples monitor the temperature inside the safe. To pass Intertek’s test, the internal temperature inside a safe must remain below 350°F. Paper burns at approximately 450°F.



| Series | Fire Label | Outside Temp | Time Period | Inside Temp Less Than |
|-------------------|------------|--------------|-------------|-----------------------|
| RF Series | 120 | 1800°F | 120 min. | 350°F |
| BFII / BFX Series | ETL 120 | 1200°F | 120 min. | 350°F |
| NF Series | ETL 90 | 1200°F | 90 min. | 350°F |
| SF Series | ETL 60 | 1200°F | 60 min. | 350°F |
| TF Series | 30 | 1200°F | 30 min. | 350°F |

¹ Original Owner/Proof of Purchase: To file a claim, you must be the original owner of the American Security Gun Safe. Within 30 days of the burglary/fire incident, you must properly file a police/fire report documenting the incident. A copy of the police or report must be submitted to American Security with your warranty claim, along with pictures of your fire/burglary damaged safe.

RF Series

(TL-30 and TL-30x6)



RF582820X6



RF703620X6
Interior



RF582820X6
Interior



RF6528
Interior

UL TL30 & TL30X6 Burglary 2 Hour Fire

FEATURES

- The highest security rated gun safe on the market!
- The only TL-30x6 gun safe on the market
- Made in the USA

SECURITY

- 6" thick high security composite door
- UL Listed TL-30 (RF6528) or TL-30x6 (RF703620X6 and RF582820X6) high security burglary classification
- Optional active 3-way bolt work
- 10 massive 1½" chrome plated bolts
- Anchor holes provided
- Standard key-locking spy-proof dial lock standard. Optional electronic lock available

WARRANTY

- 5-year parts and labor warranty when purchased with a factory installed American Security lock
- Special lifetime warranty for damage from burglary attempts and fire

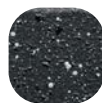
FIRE PROTECTION

- Palusol seals to protect against fire and smoke
- Fire protection of 120 minutes at 1850°F

FUNCTIONALITY

- Storage for long guns
- Door organizer providing excellent high valuable storage solutions for both guns and other personal items
- 3-outlet/USB power strip
- LED light kit
- Industry's most flexible interior

TEXTURED



Textured
Granite



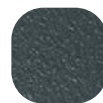
Textured
Black



Textured
White



Textured
Spa Blue



Textured
Charcoal
Gray

HARDWARE



Chrome



Brass



Black Nickel



RF6528



RF703620X6
RF582820X6



MADE IN USA

IMPORTANT:

Add 3" to outside depth for handle, dial and hinge projection.

| Model | Outside Dimension H x W x D | Door Clearance H x W | Body Thickness | Gun Capacity | Weight | Lock Type |
|------------|--------------------------------|-------------------------|----------------|------------------------|------------|------------|
| RF703620X6 | 76" x 42" x 29¼" | 70" x 36" | 3" | 36 in Safe + 2 on Door | 4,688 lbs. | See pg. 23 |
| RF582820X6 | 64" x 34" x 29¼" | 58" x 28" | 3" | 24 in Safe + 2 on Door | 3,420 lbs. | See pg. 23 |
| RF6528 | 72" x 35" x 29½" | 65" x 28" | 3½" | 24 in Safe + 2 on Door | 3,455 lbs. | See pg. 23 |

BFI Series

2 Hour Fire RSC II Burglary



BFI6636
Shown with optional
electronic lock



FEATURES

- Made in the USA
- **NEW!** Door Wraps (see website for available options)

SECURITY

- The only UL RSC II security rated gun safe on the market! Double the security rating of all other gun safe brands on the market.
- 1/2" steel plate door offering a substantial solid steel security barrier against aggressive attacks
- Double the steel protection in the body with an 11GA outer steel barrier and a 5/8" inner steel liner
- TL-15 bolt work with 10 massive 1 1/2" chrome plated bolts
- Our patented active hardplate that is typically only found on our TL security rated safes
- Anchor holes provided
- Key-locking Spy-proof dial lock standard. Optional electronic lock available

WARRANTY

- 5-year parts and labor warranty when purchased with a factory installed American Security lock
- Special lifetime warranty for damage from burglary attempts and fire

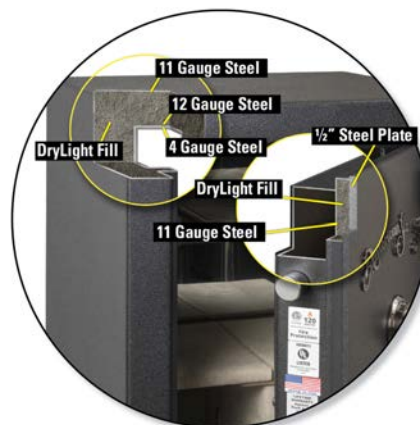
FIRE PROTECTION

- DryLight® fill - American Security's proprietary seamless, lightweight, high performance fire barrier
- ETL fire rating of 1200°F for 120 minutes
- Dual door seals to protect against fire and smoke

FUNCTIONALITY

- Industry's most flexible interior
- Door organizer
- Storage for long guns on door
- 3-outlet/USB power strip
- LED light kit
- 5-spoke handle
- L-handle (6024 model only)

BFI SERIES CONSTRUCTION



BFI GUN SAFES:

1/8" outer steel liner with 5/8" inner steel liner providing a near total 3/4" thick steel barrier for added burglary protection

| Model | Outside Dimension H x W x D | Door Clearance H x W | Body Thickness | Gun Capacity | Weight | Lock Type |
|---------|--------------------------------|-------------------------|----------------|------------------------|------------|------------|
| BFI7250 | 71 1/4" x 50" x 28" | 63 3/4" x 42 5/8" | 2 1/4" | 42 in Safe + 2 on Door | 2,438 lbs. | See pg. 23 |
| BFI7240 | 71 1/4" x 40" x 26" | 63 3/4" x 32 5/8" | 2 1/4" | 36 in Safe + 2 on Door | 1,991 lbs. | See pg. 23 |
| BFI6636 | 65 1/4" x 36" x 26" | 57 3/4" x 28 5/8" | 2 1/4" | 24 in Safe + 2 on Door | 1,716 lbs. | See pg. 23 |
| BFI6030 | 59 1/4" x 30" x 26" | 51 3/4" x 22 5/8" | 2 1/4" | 22 in Safe + 2 on Door | 1,395 lbs. | See pg. 23 |
| BFI6032 | 59 1/4" x 30" x 21" | 51 3/4" x 22 5/8" | 2 1/4" | 18 in Safe + 2 on Door | 1,244 lbs. | See pg. 23 |
| BFI6024 | 59 1/4" x 24" x 21" | 51 3/4" x 16 5/8" | 2 1/4" | 16 in Safe + 1 on Door | 1,067 lbs. | See pg. 23 |

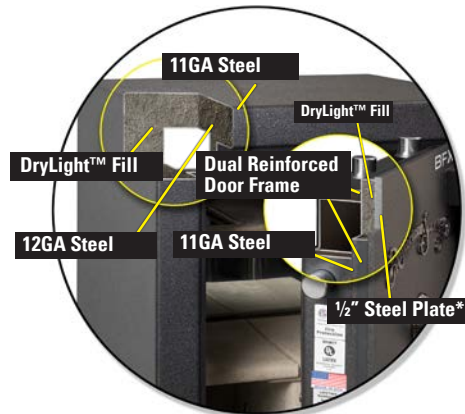
BFX Series

2 Hour Fire RSC I Burglary



BFX6030

BFX SERIES CONSTRUCTION



BFX GUN SAFES:

11GA outer steel liner with 12GA inner steel liner
totaling approx. 1/4" steel barrier

FEATURES

- Made in the USA
- **NEW!** Door Wraps (see website for available options)

SECURITY

- UL RSC I security rating
- 1/2" steel plate door (3/8" on 6024 & 7250) providing a substantial solid steel barrier against aggressive attacks
- Double the steel protection in the body with an 11GA outer steel barrier and a 12GA inner steel liner
- Active 4x locking system
- 1/4" hardplate defeats lock attacks
- Spring loaded relock mechanism
- Gear cam housing with precision engineered lock bolt protection
- 4-way active bolt work (BFX6024 has 2-way bolt work)
- 10, 14, and 16 massive 1 1/2" chrome plated bolts
- Anchor holes provided
- Optional electronic lock available
- Standard key-locking spy-proof dial lock standard. Optional electronic lock available

WARRANTY

- 5-year parts and labor warranty when purchased with a factory installed American Security lock
- Special lifetime warranty for damage from burglary attempts and fire

FIRE PROTECTION

- DryLight® fill - American Security's proprietary seamless, lightweight, high performance fire barrier
- ETL fire rating of 1200°F at 120 minutes
- Dual door seals to protect against fire and smoke

FUNCTIONALITY

- Industry's most flexible interior
- Door organizer
- Storage for long guns on door
- 3-outlet/USB power strip
- LED light kit
- 5-spoke handle
- 3-spoke handle (6024 model only)



| Model | Outside Dimension H x W x D | Door Clearance H x W | Body Thickness | Gun Capacity | Weight | Lock Type |
|---------|--------------------------------|-------------------------|----------------|------------------------|------------|------------|
| BFX7250 | 71 1/4" x 50" x 28" | 63 3/4" x 42 5/16" | 2" | 42 in Safe + 2 on Door | 1,851 lbs. | See pg. 23 |
| BFX7240 | 71 1/4" x 40" x 26" | 63 3/4" x 32 5/16" | 2" | 36 in Safe + 2 on Door | 1,647 lbs. | See pg. 23 |
| BFX6636 | 65 1/4" x 36" x 26" | 57 3/4" x 28 5/16" | 2" | 24 in Safe + 2 on Door | 1,375 lbs. | See pg. 23 |
| BFX6030 | 59 1/4" x 30" x 26" | 51 3/4" x 22 5/16" | 2" | 22 in Safe + 2 on Door | 1,081 lbs. | See pg. 23 |
| BFX6032 | 59 1/4" x 30" x 21" | 51 3/4" x 22 5/16" | 2" | 18 in Safe + 2 on Door | 958 lbs. | See pg. 23 |
| BFX6024 | 59 1/4" x 24" x 21" | 51 3/4" x 16 5/16" | 2" | 16 in Safe + 1 on Door | 751 lbs. | See pg. 23 |

BFX and BFII Series *(continued)*

COLOR OPTIONS AND INTERIOR OPTIONS



BFII6030 Shown in Onyx Gloss with Chrome Hardware and optional electronic lock



BFX6636 Shown in Sapphire Blue Gloss with Chrome Hardware, optional electronic lock, and optional finials



BFX6032 Shown in Pearl Essence Gloss with Black Nickel Hardware, optional electronic lock, and optional finials

HIGH GLOSS

| | | | | | | | |
|-------------------------|----------------------|---------------------|------------|---------------------|--------------------|--------------------|-------------------------|
| | | | | | | | |
| Charcoal Metallic Gloss | Ironside Green Gloss | Pearl Essence Gloss | Onyx Gloss | Sapphire Blue Gloss | Thermal Blue Gloss | Reign Purple Gloss | Platinum Metallic Gloss |

TEXTURED

| | | | | |
|------------------|----------------|----------------|-------------------|------------------------|
| | | | | |
| Textured Granite | Textured White | Textured Black | Textured Spa Blue | Textured Charcoal Gray |

HARDWARE FINISH

| | | |
|--------|-------|--------------|
| | | |
| Chrome | Brass | Black Nickel |

HANDLE TYPE

| | | |
|-----------------------------|--|---|
| | | |
| L-Handle (BFII6024 only) | 3-Spoke Handle (BFII6024 and BFX6024) only) | 5-Spoke Handle (All BFX and BFII models) |

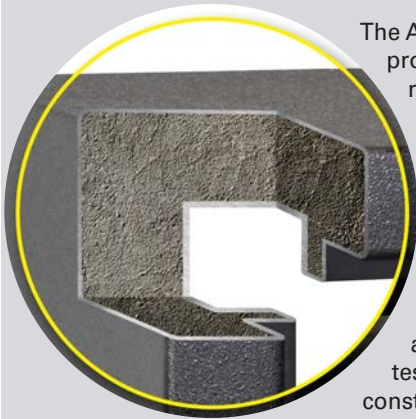
**Two-tone combinations available with textured body, using any standard textured color, and either high gloss or textured door. Please refer to Standard Colors list.*

*** Quotes available for other custom options such as two-tone high gloss, discontinued colors, or color match to your specifications, subject to manufacturing limitations.*

BFX/BFII INTERIOR CONFIGURATIONS

| | | | | | | | |
|----------------------------|----------------------------|----------------------------|----------------------------|----------------------------|----------------------------|----------------------------|----------------------------|
| | | | | | | | |
| 7250 Standard Gun Interior | 7250 Optional Gun Interior | 7240 Standard Gun Interior | 7240 Optional Gun Interior | 6636 Standard Gun Interior | 6030 Standard Gun Interior | 6032 Standard Gun Interior | 6024 Optional Gun Interior |

WHAT IS DRYLIGHT®?



The American Security® BF® Gun Safes are the best gun safe available today. For burglary protection, it has a massive 1/2"-thick steel plate in the door. For fire protection, it is filled with our revolutionary DryLight.

For many years, smaller fire safes have been constructed with a poured fill material. But larger gun safes pose several manufacturing challenges when it comes time to fill them with insulating materials. Because of this, the industry adopted the use of drywall as the primary material for fire protection. The problem with using drywall is that no matter how much care is taken in assembling the many pieces of drywall into the safe body, gaps and joints still remain in the construction that can allow heat to penetrate the safe body. American Security was able to overcome this technical challenge by developing manufacturing processes that allow us to produce a safe body filled with the seamless DryLight fire barrier. Independent testing at Intertek Laboratories has confirmed that these safes outperform gun safe bodies constructed with drywall.

BFX/BFII BURGLARY RATINGS COMPARISON

| BFX Gun Safes - RSC Level I (1-Man, 5 minute test. Utilizes tools typically found in a household) | | BFII Gun Safes - RSC Level II (2-man Team, 10 minute test. Utilizes same tools as a TL-15 test) | |
|--|--|--|--|
| 1/4" Dia. Punch | | 1/2" Dia. Punch | |
| Sledge Hammer 3 lb. | | Sledge Hammer 10 lb. | |
| Crow Bar, 18" | | Pry Bar, 6 ft. | |
| Chisel 1/2" | | Chisel 1" Wide x 12" L | |
| Screw Driver 18 | | Screw Driver 18 | |
| 1/4" Drill Bits | | 1/2" Drill Bits | |
| 3/8" Drill | | 1/2" HD Drill | |
| | | Pick, 30" | |
| | | Axe, 35" | |
| | | 4" Conic Punch | |
| | | Pin Hammer | |
| | | Wedge, Log Splitting | |
| | | Punch/Chisel Holder | |
| | | | |

RSC LEVEL I TOOL COMPLEMENT



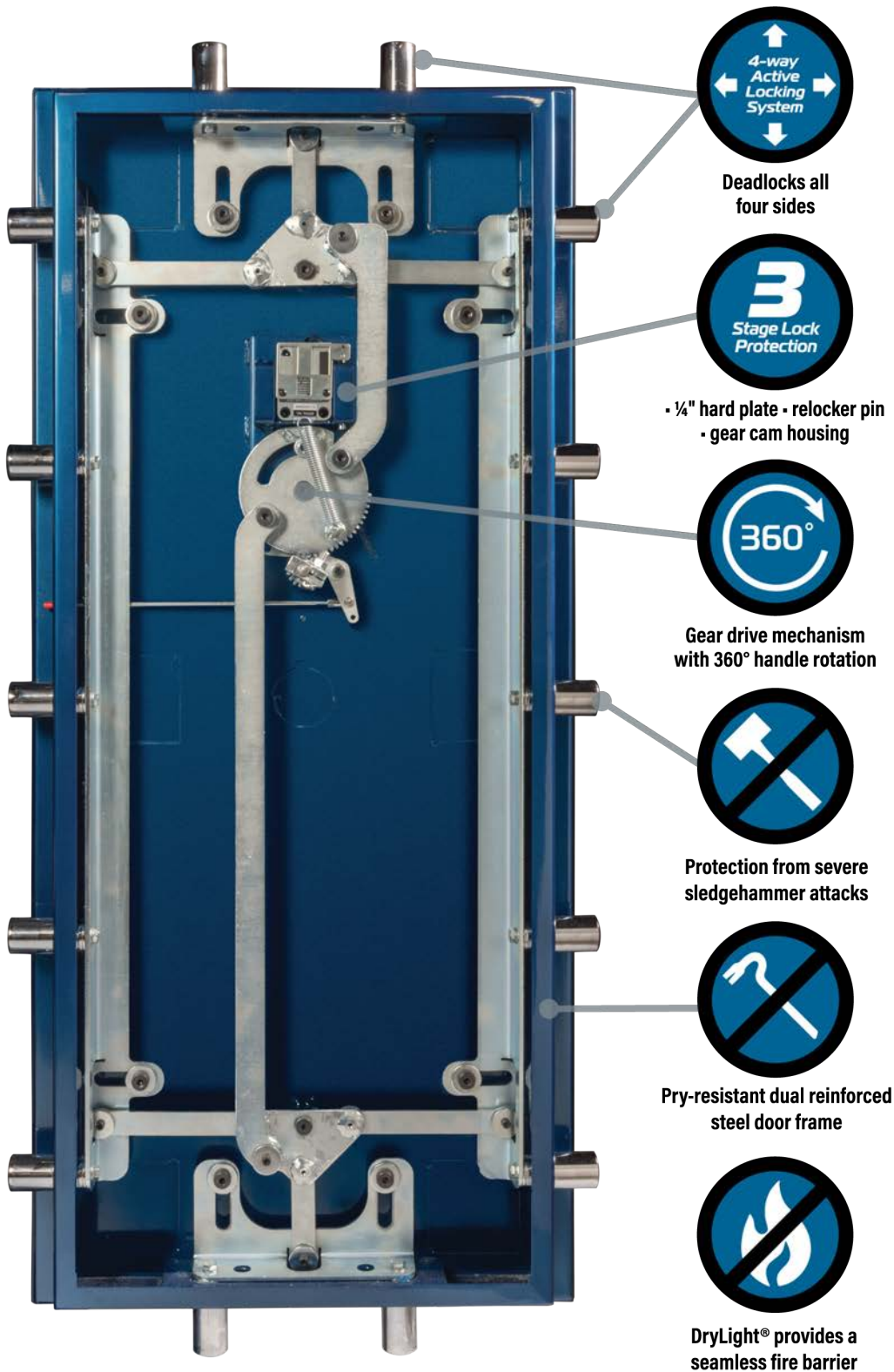
RSC LEVEL II TOOL COMPLEMENT



BFX Series *(continued)*

ACTIVE 4X LOCKING SYSTEM

BUILT WITH UNBEATABLE SECURITY
FEATURES THAT KEEP BURGLARS OUT!



BFX Series *(continued)*

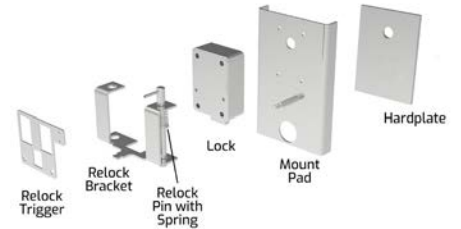
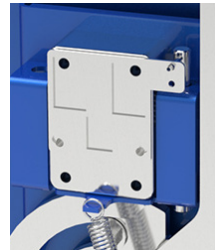
ACTIVE 4X LOCKING SYSTEM

BUILT WITH UNBEATABLE SECURITY
FEATURES THAT KEEP BURGLARS OUT!



DRILL ATTACK PROTECTION

- ¼" hardplate and top-rated hardened disc defeats lock attacks
- Spring-loaded relock mechanism
- Gear cam housing with precision engineered lock bolt protection



GEAR-DRIVEN BOLTWORK WITH 360° HANDLE ROTATION

Drives the industry's longest solid steel locking bolts deep into the body of the safe protecting the safe against severe pry attacks.



SLEDGEHAMMER IMPACT-RESISTANT BOLTWORK

Protects the heart of the Active 4x locking mechanism from severe sledgehammer attacks.



PRY-RESISTANT DUAL REINFORCED STEEL DOOR FRAME

Protects the heart of the Active 4x locking mechanism from severe pry attacks.



NF Series

90 Minute Fire RSC I Burglary

The American Security® NF Gun Safe offers both superior performance and value. For burglary protection, it has a stout ¼"-thick steel plate door. For fire protection, it is lined with three to four layers of fire protection panels that are strategically engineered for optimal fire protection. This enables the NF Gun Safe to pass a verified 90-minute fire test at Intertek, an independent testing laboratory.

FEATURES

- Lifetime warranty against burglary and fire

SECURITY

- ¼" solid steel plate door, providing superior protection against pry attacks, along with an 11GA solid steel body
- 4-way bolt work
- UL RSC I security rating
- 14 massive 1½" chrome plated bolts
- Anchor holes provided
- UL Listed ESL10 electronic lock
- Decorative five-spoke handle

FIRE PROTECTION

- Lined with 3-4 layers of fire protection panels
- Dual door seals to protect against fire and smoke
- ETL fire rating of 1200°F for 90 minutes

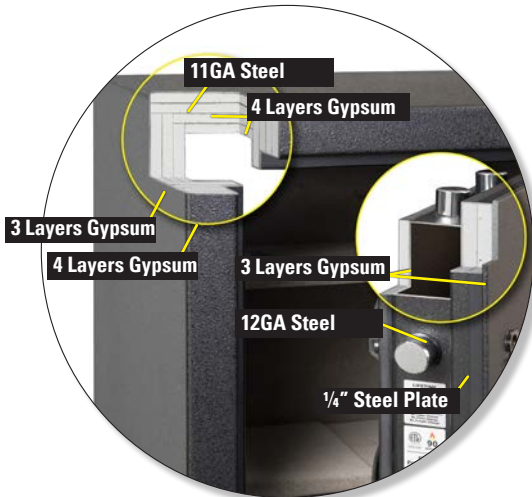
FUNCTIONALITY

- Industry's most flexible interior
- Door organizer
- Storage for 2 long guns on door (1 on NF5924)
- AC power outlet with removable cord
- LED light kit

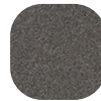


NF6036

NF SERIES CONSTRUCTION



TEXTURED



Textured
Gunmetal
Gray

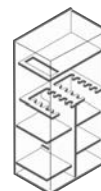
HARDWARE



Black
Nickel



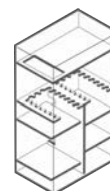
NF5924
Interior



NF6032
Interior



NF6030
Interior



NF6036
Interior

| Model | Outside Dimension H x W x D | Door Clearance H x W | Body Thickness | Gun Capacity | Weight | Lock Type |
|--------|--------------------------------|-------------------------|----------------|------------------------|----------|-----------|
| NF6036 | 59" x 36" x 26" | 52" x 28¾" | 2⅜" | 34 in Safe + 2 on Door | 977 lbs. | ESL10 |
| NF6030 | 59" x 30" x 26" | 52" x 22¾" | 2⅜" | 28 in Safe + 2 on Door | 788 lbs. | ESL10 |
| NF6032 | 59" x 30" x 21" | 52" x 22¾" | 2⅜" | 18 in Safe + 2 on Door | 761 lbs. | ESL10 |
| NF5924 | 59" x 24" x 18" | 52" x 16¾" | 2⅜" | 16 in Safe + 1 on Door | 600 lbs. | ESL10 |

SF Series

60 Minute Fire B-Rate Burglary



SF6032

The American Security® SF gun safe offers both performance and value. For burglary protection, it has a stout $\frac{3}{16}$ " - thick steel plate door. For fire protection, it is lined with three to four layers of fire protection panels that are strategically engineered for optimal fire protection. This enables the SF Gun Safe to pass a verified 60-minute fire test at Intertek, an independent testing laboratory.

FEATURES

- Lifetime warranty against burglary and fire

SECURITY

- $\frac{3}{16}$ " solid steel plate door providing superior protection against pry attacks
- 12GA solid steel body lined with 3-4 layers of fire protection panels providing respectable burglary and fire protection
- 4-way bolt work offering an extra layer of security on all 4 sides of the door
- 14 massive $\frac{1}{4}$ " chrome plated bolts
- Anchor holes provided
- Decorative 3-spoke handle

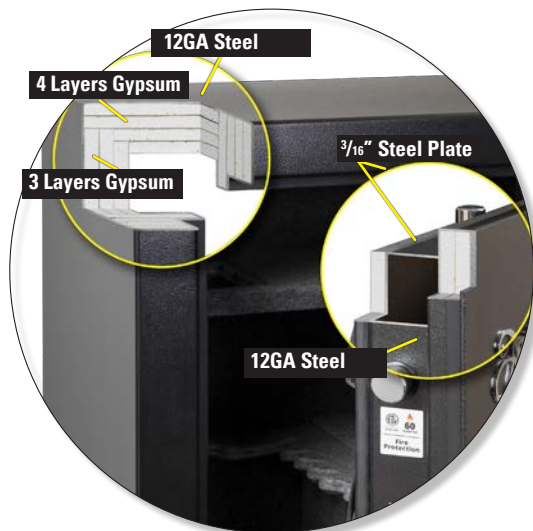
FIRE PROTECTION

- Dual door seals to protect against fire and smoke
- ETL fire rating of 1200°F for 60 minutes

FUNCTIONALITY

- UL Listed ESL5 electronic lock with illuminated keypad
- Industry's most flexible interior
- Door organizer
- Storage for 2 long guns on door
- LED light kit

SF SERIES CONSTRUCTION



TEXTURED

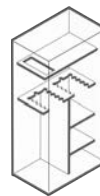


Textured
Black

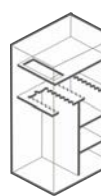
HARDWARE



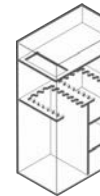
Black
Nickel



SF6032
Interior



SF6030
Interior



SF6036
Interior



SF7240
Interior

| Model | Outside Dimension H x W x D | Door Clearance H x W | Body Thickness | Gun Capacity | Weight | Lock Type |
|--------|--------------------------------|-------------------------|----------------|------------------------|------------|-----------|
| SF7240 | 72" x 40" x 26" | 63½" x 31½" | 2" | 45 in Safe + 2 on Door | 1,086 lbs. | ESL5 |
| SF6036 | 59" x 36" x 26" | 50½" x 27½" | 2" | 34 in Safe + 2 on Door | 840 lbs. | ESL5 |
| SF6030 | 59" x 30" x 26" | 50½" x 21½" | 2" | 30 in Safe + 2 on Door | 748 lbs. | ESL5 |
| SF6032 | 59" x 30" x 21" | 50½" x 21½" | 2" | 18 in Safe + 2 on Door | 662 lbs. | ESL5 |

TF Series



TF5517

30 Minute Fire B-Rate Burglary

The American Security® TF Gun Safe offers economic trusted protection. For burglary protection, it has a stout $\frac{3}{16}$ "-thick steel plate door. For fire protection, it is lined with fire protection panels that are strategically engineered for 30 minutes of fire protection.

FEATURES

- An economical gun safe offering impressive features!
- Lifetime warranty against burglary and fire

SECURITY

- $\frac{3}{16}$ " solid steel plate door, providing superior protection against pry attacks
- 4-way bolt work offering an extra layer of security on all 4 sides of the door
- 14GA solid steel body lined
- (14) $1\frac{1}{4}$ " chrome plated bolts on TF5924E5
- (8) 1" chrome plated bolts on TF5517E5
- Anchor holes provided
- UL Listed ESL5 electronic lock with illuminated keypad

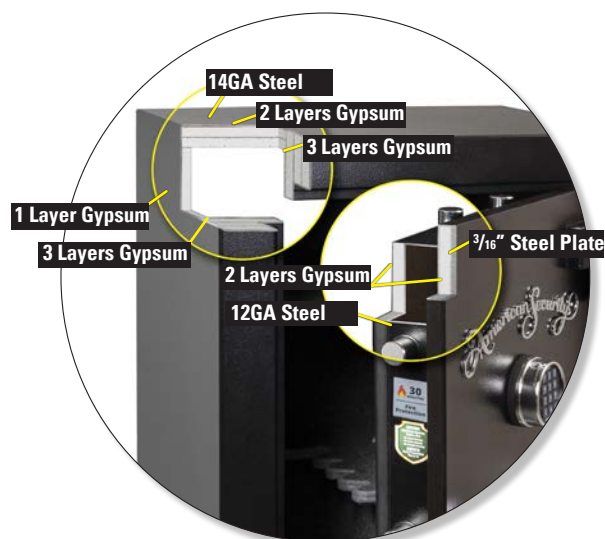
FIRE PROTECTION

- Lined with 2 layers of fire protection panels on the ceiling and door
- Lined with 1 layer of fire protection panels in all the walls
- Dual door seals to protect against fire and smoke
- Fire rating of 1200°F for 30 minutes

FUNCTIONALITY

- Decorative 3-spoke handle on TF5924E5, "L" style handle on TF5517E5.
- Industry's most flexible interior
- Door organizer
- TF5924 has storage for 1 long gun on the door

TF SERIES CONSTRUCTION



TEXTURED



Textured
Black



NEW!
Textured
White
(TF5517 only)

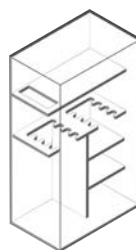
HARDWARE



Black
Nickel
(TF5924)



Black
Nickel
(TF5517)



TF5924
Interior



TF5517
Interior

| Model | Outside Dimension H x W x D | Door Clearance H x W | Body Thickness | Gun Capacity | Weight | Lock Type |
|--------|---|--------------------------|----------------|------------------------|----------|-----------|
| TF5924 | 59" x 24" x 18" | 52" x 16 $\frac{3}{4}$ " | 1" | 17 in Safe + 1 on Door | 388 lbs. | ESL5 |
| TF5517 | 55 $\frac{1}{4}$ " x 17 $\frac{3}{4}$ " x 16" | 49 $\frac{1}{2}$ " x 12" | 1" | 11 in Safe only | 286 lbs. | ESL5 |

AM Series

45 Minute Fire B-Rate Burglary

FEATURES:

- ¼" solid steel plate door, providing superior protection against pry attacks
- Powder-coated blue with black nickel hardware
- Gray fabric interior
- Backlit UL Listed ESL5 electronic lock with stealth mode keypad
- 12GA steel body
- Lined with fire protection panels
- ETL fire rating of 1200°F for 45 minutes
- 3-way bolt work
- 4 pre-cut anchor holes
- AM2020E5: 1 shelf
- AM3020E5: 2 shelves
- AM4020E5: 3 shelves

TEXTURED



Deep
Blue

HARDWARE



Black
Nickel



AM4020E5



AM2020E5



AM3020E5

| Model | Outside Dimension H x W x D | Door Clearance H x W | Body Thickness | Interior Capacity | Weight | Lock Type |
|----------|--------------------------------|-------------------------|----------------|-------------------|----------|-----------|
| AM2020E5 | 20" x 20" x 20" | 14½" x 14½" | 12GA | 2.21 cu. ft. | 170 lbs. | ESL 5 |
| AM3020E5 | 30" x 20" x 20" | 24½" x 14½" | 12GA | 3.54 cu. ft. | 230 lbs. | ESL 5 |
| AM4020E5 | 40" x 20" x 20" | 34½" x 14½" | 12GA | 4.88 cu. ft. | 316lbs. | ESL 5 |

Jewelry Safes

30 & 45 Minute Fire B-Rate Burglary



NEW! JS5517 **30 Minute Fire**

JS2020E5 AND NEW! JS5517 FEATURES:

- 1/4" solid steel plate door (3/16" for JS5517), providing superior protection against pry attacks
- Textured white exterior with black nickel hardware
- Quilted faux leather interior
- 2 interior drawers (5 drawers for JS5517)
- Backlit UL Listed ESL5 electronic lock
- 12GA steel body (14GA for JS5517)
- Lined with fire protection panels
- JS5517: Fire rating of 1200°F for 30 minutes
- JS2020E5: ETL fire rating of 1200°F for 45 minutes
- 3-way bolt work
- 4 pre-cut anchor holes
- Motion sensor LED light kit
- Necklace hangers

NEW! JS2020E5 PEDESTAL

- 4 anchor holes for securing the base to the floor
- 3 slots in the back for anchoring to a wall stud
- Pedestal must be secured tot he floor or wall stud using the furnished hardware



JS2020E5 **45 Minute Fire**

TEXTURED



Semi-Gloss
White

HARDWARE



Black
Nickel



NEW! JS2020E5 Pedestal



JS5517



JS2020E5

| Model | Outside Dimension H x W x D | Door Clearance H x W | Body Thickness | Interior Capacity | Weight | Lock Type |
|-------------------|--------------------------------|-------------------------|----------------|-------------------|----------|-----------|
| JS2020E5 | 20" x 20" x 20" | 14½" x 14½" | 12GA | 2.30 cu. ft. | 170 lbs. | ESL 5 |
| JS5517 | 55" x 17¾" x 16" | 49½" x 12" | 1" | 5.62 cu. ft. | 286 lbs. | ESL 5 |
| JS2020E5 Pedestal | 24" X 20" x 20" | N/A | N/A | N/A | 70 lbs. | N/A |

FS Series



FS1814E5

UL 1 Hour Fire B-Rate Burglary

American Security's 1-Hour Fire Safes are the only UL Listed 1-hour fire safe offering a UL Listed electronic lock. These locks offer far greater security than the locks offered on any other 1-hour fire safe.

FEATURES

- The only safe in its class that comes with back lit keypad making it easier to enter your combination
- Textured Black Granite color

FS914E5LP AND FS149E5LP FEATURES

- The only safe in its class with a UL Listed type 1 ESL5LP electronic lock preventing the safe from being "bounced open"
- 1 drawer shelf
- Handle operated side-locking mechanism with 2 chromed locking bolts
- 2 deadbolts prevent door removal
- 4 rubber feet
- 1 recessed anchor hole and hardware
- UL fire rating of 60 minute at 1700°F

FS1814E5 FEATURES

- UL ESL5 electronic lock
- Handle operated locking mechanism with 3-way boltwork
- 2 deadbolts prevent door removal
- 1 key-lock drawer and 1 adjustable shelf
- 1 internal anchor hole and hardware
- UL fire rating of 60 minute

| Model | Outside Dimension H x W x D | Door Clearance H x W | Body Thickness | Interior Capacity | Weight | Lock Type |
|-----------|--|--|-------------------|-------------------|----------|-----------|
| FS914E5LP | 14 $\frac{1}{8}$ " x 19 $\frac{1}{2}$ " x 15 $\frac{1}{4}$ " | 9 $\frac{3}{4}$ " x 15 $\frac{3}{8}$ " | 2 $\frac{1}{8}$ " | 0.86 cu. ft. | 96 lbs. | ESL5LP |
| FS149E5LP | 19 $\frac{1}{2}$ " x 14 $\frac{1}{8}$ " x 15 $\frac{1}{4}$ " | 15 $\frac{3}{8}$ " x 9 $\frac{3}{4}$ " | 2 $\frac{1}{8}$ " | 0.86 cu. ft. | 96 lbs. | ESL5LP |
| FS1814E5 | 23 $\frac{5}{8}$ " x 18 $\frac{7}{8}$ " x 18 $\frac{1}{2}$ " | 18" x 13 $\frac{1}{4}$ " | 2 $\frac{3}{4}$ " | 1.72cu. ft. | 164 lbs. | ESL5 |

EST Series



EST916

Steel Container B-Rate Burglary

FEATURES

- DL6000 bounce-proof electronic lock with a large LCD display allows smooth and easy operation
- LCD display shows low-battery indicator, time, date and keypad
- Emergency key-lock override system with 2 keys, power override battery box, built-in spy-proof function and motion detector alert
- Can be bolted to the wall or floor
- Carpeted base
- Pry-resistant recessed door with internal hinges for anti-theft protection
- Anchor hardware standard
- Models EST1014 and EST2014 have 1 removable shelf
- Textured Cream color

| Model | Outside Dimension H x W x D | Door Clearance H x W | Body Thickness | Interior Capacity | Weight | Lock Type |
|---------|--|--|----------------|-------------------|---------|-----------|
| EST813 | 7 $\frac{7}{8}$ " x 12 $\frac{1}{4}$ " x 8" | 5 $\frac{3}{4}$ " x 8 $\frac{1}{4}$ " | 14GA | 0.29 cu. ft. | 16 lbs. | DL6000 |
| EST916 | 9" x 16" x 13 $\frac{1}{4}$ " | 6 $\frac{3}{4}$ " x 12 $\frac{1}{8}$ " | 14GA | 0.90 cu. ft. | 27 lbs. | DL6000 |
| EST1014 | 9 $\frac{7}{8}$ " x 13 $\frac{3}{4}$ " x 9 $\frac{7}{8}$ " | 7 $\frac{7}{8}$ " x 9 $\frac{3}{8}$ " | 14GA | 0.54 cu. ft. | 22 lbs. | DL6000 |
| EST2014 | 19 $\frac{3}{4}$ " x 13 $\frac{3}{4}$ " x 12 $\frac{1}{4}$ " | 17 $\frac{1}{8}$ " x 9 $\frac{1}{4}$ " | 14GA | 1.53 cu. ft. | 40 lbs. | DL6000 |

Concealed Safe



UBS648



Steel Container B-Rate Burglary

The UBS648 "Under Bed Safe" offers a secure, discreet, and compact storage solution with an ultra-slim 6-inch profile that fits under most beds or in the back of an SUV. Designed for versatility, it features top and bottom mounting holes for floor or bed frame installation. The centrally located digital keypad and tilt-out tray design provide quick and easy access to your firearms or valuables.

FEATURES

- Highly versatile
- Tilt-out door for easy access
- Foam padded slide-out gun tray
- UL Listed ESL5-LP electronic lock with backlit and stealth mode keypad
- 18GA & 7GA body steel construction
- 4-point locking bar
- 4 mounting holes on the top and bottom of safe to allow stackability
- Side handles with cutouts to attach straps or security cables for truck storage
- Concealed mini flashlight
- Storage in back of car and under bed

| Model | Outside Dimension H x W x D | Door Clearance H x W | Body Thickness | Interior Capacity | Weight | Lock Type |
|--------|---|--|----------------|-------------------|---------|-----------|
| UBS648 | 6" x 48" x 14 ⁵ / ₈ " | 13" x 44 ¹ / ₂ " | 1/16" | 1.50 cu. ft. | 80 lbs. | ESL5LP |

Handgun Series

Steel Container B-Rate Burglary



PS1210HD



PS1208EZ



HAS410

FEATURES

- Used to store pistols
- Reliable fast access Simplex push button mechanical locking device
- Strong, pry-resistant locking bolt
- Locking mechanism protected by steel housing, impervious to punch attacks
- Heavy-duty chrome carrying handle
- Protective high density pluck foam-lined interior
- 4 pre-drilled bolt down holes
- Packaged for UPS/FedEx shipments.

| Model | Outside Dimension H x W x D | Door Clearance H x W | Body Thickness | Interior Capacity | Weight | Lock Type |
|----------|---|---|----------------|-------------------|---------|--------------------------------|
| PS1210HD | 10 ¹ / ₄ " x 12 ¹ / ₄ " x 4 ¹ / ₄ " | 9 ⁵ / ₈ " x 11 ⁵ / ₈ " | 10GA | 0.16 cu. ft. | 24 lbs. | Simplex Mechanical Push Button |
| PS1208EZ | 8 ¹ / ₈ " x 12 ¹ / ₄ " x 4" | 7 ³ / ₄ " x 11 ³ / ₄ " | 14GA | 0.13 cu. ft. | 11 lbs. | Simplex Mechanical Push Button |
| HAS410 | 12 ³ / ₈ " x 10" x 4 ³ / ₁₆ " | 10 ⁹ / ₁₆ " x 7 ¹ / ₄ " | 10GA | 0.10 cu. ft. | 20 lbs. | Simplex Mechanical Push Button |

Vault Door Series

**Provides 2 Hour Fire
RSC I Burglary**



VD8036BF

FEATURES:

- 2" thick door
- Made in the USA
- (10) 1½" chrome plated bolts (5 bolts on inswing doors)
- Adjustable frame to fit walls ranging from 4¾" to 9½" thick
- Only VD offered with a "poured" fire protection mixture (DryLight®)
- American Security's proprietary seamless, lightweight, high performance fire barrier
- Safety lock release
- Spy-proof key-locking dial
- 1 year parts and labor warranty

BF SERIES VAULT DOOR FEATURES:

- ½" steel plate on face of door providing a superior security barrier
- 1¾" of seamless DryLight® as fire protection

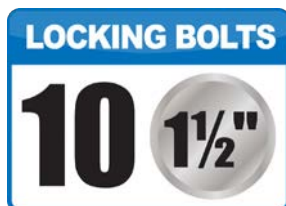
OPTIONAL FEATURES:

- Left or right swing door

PANIC LOCK FEATURES:

- Standard with all VD models
- Allows the user to safely lock themselves inside, despite the lock combination being entered from the outside

VD8030BF / VD8036BF / VD8042BF



TEXTURED



Textured
Granite



Textured
Black



Textured
White



Textured
Spa Blue



Textured
Charcoal
Gray

HARDWARE



Brass



Chrome



Black Nickel

| Model | Swing Type | Wall Opening H x W | Door Opening H x W | Weight | Lock Type |
|------------|------------|-----------------------|-----------------------|------------|---|
| VD8030BF | Out-Swing | 79½" x 29½" | 77½" x 24¾" | 839 lbs. | Spy-Proof Key-Locking Dial ESL5 ESL10 |
| VD8030BFIS | In-Swing | 79½" x 29½" | 77" x 20¾" | 816 lbs. | Spy-Proof Key-Locking Dial ESL5 ESL10 |
| VD8036BF | Out-Swing | 79½" x 35½" | 77½" x 31" | 989 lbs. | Spy-Proof Key-Locking Dial ESL5 ESL10 |
| VD8036BFIS | In-Swing | 79½" x 35½" | 77" x 26¼" | 962 lbs. | Spy-Proof Key-Locking Dial ESL5 ESL10 |
| VD8042BF | Out-Swing | 79½" x 41½" | 77½" x 37" | 1,139 lbs. | Spy-Proof Key-Locking Dial ESL5 ESL10 |
| VD8042BFIS | In-Swing | 79½" x 41½" | 77" x 34¼" | 1,098 lbs. | Spy-Proof Key-Locking Dial ESL5 ESL10 |

Stor-It Cabinets



2-Drawer



4-Drawer

2-DRAWER FEATURES

- Top drawer includes a 7 compartment ring organizer and two 6 compartment jewelry organizers
- Bottom drawer can be used for bulky items or converts to a file drawer

4-DRAWER FEATURES

- Drawer 1 features four compartment jewelry organizers
- Drawer 2 features a 15 compartment ring organizer
- Drawer 3 features 5 necklace organizers
- Drawer 4 can be used for bulky items.

Stor-It Cabinets will slide into the following safe models without modification:

- BFX7250, BFII7250, BF1716, BF3416
- CE2518, CE3524, CE4524, CE5524, CE6528
- CF2518, CF3524, CF4524, CF5524, CF6528, CF7236

Stor-It Cabinets may be used with the following safe models, but require custom interior at time of purchase:

- BFX7240, BFX6636, BFX6030, BFII7240, BFII6636, BFII6030

| Model | Outside Dimension H x W x D | Door Clearance H x W |
|----------|---|-------------------------|
| 2-Drawer | 16 ⁵ / ₈ " x 15 ⁷ / ₈ " x 14 ³ / ₁₆ " | 34 |
| 4-Drawer | 16 ⁵ / ₈ " x 15 ⁷ / ₈ " x 14 ³ / ₁₆ " | 39 |

The Safe Cloak



Safe Cloak



HIDE YOUR GUN SAFE IN PLAIN SIGHT!

Instantly disguise your gun safe with American Security’s Safe Cloak. Available in 5 different sizes, the Safe Cloak fits over your gun safe to instantly disguise it as a wood cabinet. Strong magnets and a sewn-in PVC board at the top easily and securely hold the cloak in place. The thermal-transfer, four-color wood-cabinet print is so good, it will fool not only passersby, but guests as well.

Available in the following model sizes: 6024, 6030, 6636, 7240, 7250.

Locks

For quick and easy entry, an electronic lock is the lock of choice. These locks are powered by batteries located in the keypad and allow you to change your combination anytime.



ESL5
Available in Chrome and Black Nickel Finish



ESL20
Available in Black Finish



KEY LOCKING FRONT READ DIAL
Key is used to lock dial in a fixed position and affords dual custody control. Manager has the combination, collector has the key. Both must be present to unlock the safe.



U.L. LISTED HIGH SECURITY KEY LOCK
European style nine-lever changeable key lock offers exceptional security features for use on inner locker or outer safe doors.



ESL10
Available in Brass, Chrome and Black Nickel, and Black Finish



SPYPROOF KEYLOCKING DIAL
Restricts unauthorized viewing while dialing the combination, as well as providing dual custody control.



FRONT READ DIAL
Safes equipped with Time Locks offer the capability of locking the safe for a pre-selected period of time. Time periods range from one hour to 144 hours (6 full days).



SPYPROOF DIAL
Restricts unauthorized viewing while dialing combination. Also available with key locking feature.



ESL5LP
Available in Black

Other Options



.50 CALIBER HANDLE
Available in Black Nickel BFX, BFII & NF Gun Safes only.



DEHUMIDIFIER ROD
Keeps your guns safe from the threat of rust, pitting and moisture damage. Electrical access required.



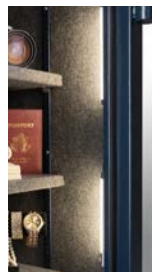
JEWELRY DRAWER
Velvet lined jewelry drawer that can be installed on top or underneath any shelf larger than 10" wide and 13¹³/₁₆ deep.



48" LED LIGHT KIT
Has (2) 48" light strips with high-intensity white LED lights and a motion sensor that automatically turns the lights on when motion is detected. The lights turn off 30 seconds after motion has stopped. This light kit can be installed on any American Security safe and is also available as a retrofit kit.



POWER STRIP
3-Outlet Power Strip with two USB ports and removable cord.



8" COMPACT LED LIGHT KIT
Provides greater visibility inside smaller American Security® safes. Features (2) 8" light strips with high-intensity white LED lights and a motion sensor that automatically turns the lights on when motion is detected. The lights turn off 30 seconds after motion has stopped. This light kit can be installed on any American Security safe. Includes battery pack. Retrofit Only.

PREMIUM UPGRADE PACKAGE FOR BFX, NF AND SF SAFES

When you choose to upgrade your American Security BFX, NF or SF Series with a Premium Package, we'll add on some of our most popular options, including the Dehumidifier Rod, a Jewelry Drawer, an LED light kit*, and a 3-outlet power strip with USB.

*LED light kit standard on BFII, BFX, and RF gun safes



Gun Safes at a Glance

| Model | Exterior Dimensions | Gun Capacity | Weight Lbs. | PDO Included | Bolts | Bolt Dia. | Relocker | |
|-------------|---------------------|------------------------|-------------|--------------|-------|-----------|----------|--|
| RF SERIES | | | | | | | | |
| RF703620X6 | 76" x 42" x 29¼" | 36 in Safe + 2 on Door | 4,688 | Yes | 10 | 1½" | Yes | |
| RF582820X6 | 64" x 34" x 29¼" | 24 in Safe + 2 on Door | 3,420 | Yes | 10 | 1½" | Yes | |
| RF6528 | 72" x 35" x 29½" | 24 in Safe + 2 on Door | 3,455 | Yes | 10 | 1½" | Yes | |
| BFII SERIES | | | | | | | | |
| BFII7250 | 71¼" x 50" x 28" | 42 in Safe + 2 on Door | 2,438 | Yes | 10 | 1½" | Yes | |
| BFII7240 | 71¼" x 40" x 26" | 36 in Safe + 2 on Door | 1,991 | Yes | 10 | 1½" | Yes | |
| BFII6636 | 65¼" x 36" x 26" | 24 in Safe + 2 on Door | 1,716 | Yes | 10 | 1½" | Yes | |
| BFII6030 | 59¼" x 30" x 26" | 22 in Safe + 2 on Door | 1,395 | Yes | 10 | 1½" | Yes | |
| BFII6032 | 59¼" x 30" x 21" | 18 in Safe + 2 on Door | 1,244 | Yes | 10 | 1½" | Yes | |
| BFII6024 | 59¼" x 24" x 21" | 16 in Safe + 1 on Door | 1,067 | Yes | 10 | 1½" | Yes | |
| BFX SERIES | | | | | | | | |
| BFX7250 | 71¼" x 50" x 28" | 42 in Safe + 2 on Door | 1,789 | Yes | 16 | 1½" | Yes | |
| BFX7240 | 71¼" x 40" x 26" | 36 in Safe + 2 on Door | 1,585 | Yes | 16 | 1½" | Yes | |
| BFX6636 | 65¼" x 36" x 26" | 24 in Safe + 2 on Door | 1,319 | Yes | 16 | 1½" | Yes | |
| BFX6030 | 59¼" x 30" x 26" | 22 in Safe + 2 on Door | 1,036 | Yes | 14 | 1½" | Yes | |
| BFX6032 | 59¼" x 30" x 21" | 18 in Safe + 2 on Door | 913 | Yes | 14 | 1½" | Yes | |
| BFX6024 | 59¼" x 24" x 21" | 16 in Safe + 1 on Door | 720 | Yes | 10 | 1½" | Yes | |
| NF SERIES | | | | | | | | |
| NF6036 | 59" x 36" x 26" | 34 in Safe + 2 on Door | 977 | Yes | 14 | 1½" | Yes | |
| NF6030 | 59" x 30" x 26" | 28 in Safe + 2 on Door | 788 | Yes | 14 | 1½" | Yes | |
| NF6032 | 59" x 30" x 21" | 18 in Safe + 2 on Door | 761 | Yes | 14 | 1½" | Yes | |
| NF5924 | 59" x 24" x 18" | 16 in Safe + 1 on Door | 600 | Yes | 14 | 1½" | Yes | |
| SF SERIES | | | | | | | | |
| SF7240 | 72" x 40" x 26" | 45 in Safe + 2 on Door | 1,086 | Yes | 14 | 1¼" | Yes | |
| SF6036 | 59" x 36" x 26" | 34 in Safe + 2 on Door | 840 | Yes | 14 | 1¼" | Yes | |
| SF6030 | 59" x 36" x 26" | 30 in Safe + 2 on Door | 748 | Yes | 14 | 1¼" | Yes | |
| SF6032 | 59" x 30" x 21" | 18 in Safe + 2 on Door | 662 | Yes | 14 | 1¼" | Yes | |
| TF SERIES | | | | | | | | |
| TF5924 | 59" x 24" x 18" | 17 in Safe + 1 on Door | 388 | Yes | 14 | 1¼" | Yes | |
| TF5517 | 55¼" x 17¾" x 16" | 11 in Safe only | 286 | Yes | 8 | 1" | Yes | |

Dimensions listed are exterior dimensions. Add 2¾" on all BF and NF safes and 2" on all other safes to overall depth for lock and handle.

Gun Safes at a Glance

| | Warranty | U.L. Listing | Thickness | | Fire Rating | Standard Lock | Handle | Standard Interior |
|--|---|--------------|--|-------------------|---------------------|--|----------|-------------------|
| | 1-year parts and labor warranty when purchased with a factory installed American Security lock. Lifetime warranty for damage from burglary attempts and fire. | TL30-X6 | 6" | 3" | 120 min / 1800° | Spy-Proof Key-Locking Dial | 5-Spoke | Gray Leather |
| | | TL30-X6 | 6" | 3" | 120 min / 1800° | Spy-Proof Key-Locking Dial | 5-Spoke | Gray Leather |
| | | TL30 | 6" | 3" | 120 min / 1800° | Spy-Proof Key-Locking Dial | 5-Spoke | Gray Leather |
| | 5-year parts and labor warranty when purchased with a factory installed American Security lock. Special lifetime warranty for damage from burglary attempts and fire. | RSC Level II | 4 $\frac{5}{8}$ " / 3 $\frac{1}{8}$ " | 2 $\frac{1}{4}$ " | ETL 120 min / 1200° | Spy-Proof, Key-Locking Dial, ESL5, ESL10 | 5-Spoke | Gray Leather |
| | | RSC Level II | 4 $\frac{3}{4}$ " / 1 $\frac{1}{2}$ " | 2 $\frac{1}{4}$ " | ETL 120 min / 1200° | Spy-Proof, Key-Locking Dial, ESL5, ESL10 | 5-Spoke | Gray Leather |
| | | RSC Level II | 4 $\frac{3}{4}$ " / 1 $\frac{1}{2}$ " | 2 $\frac{1}{4}$ " | ETL 120 min / 1200° | Spy-Proof, Key-Locking Dial, ESL5, ESL10 | 5-Spoke | Gray Leather |
| | | RSC Level II | 4 $\frac{3}{4}$ " / 1 $\frac{1}{2}$ " | 2 $\frac{1}{4}$ " | ETL 120 min / 1200° | Spy-Proof, Key-Locking Dial, ESL5, ESL10 | 5-Spoke | Gray Leather |
| | | RSC Level II | 4 $\frac{3}{4}$ " / 1 $\frac{1}{2}$ " | 2 $\frac{1}{4}$ " | ETL 120 min / 1200° | Spy-Proof, Key-Locking Dial, ESL5, ESL10 | 5-Spoke | Gray Leather |
| | | RSC Level II | 4 $\frac{5}{8}$ " / 3 $\frac{1}{8}$ " | 2 $\frac{1}{4}$ " | ETL 120 min / 1200° | Spy-Proof, Key-Locking Dial, ESL5, ESL10 | L-Handle | Gray Leather |
| | 5-year parts and labor warranty when purchased with a factory installed American Security lock. Special lifetime warranty for damage from burglary attempts and fire. | RSC Level I | 4 $\frac{5}{8}$ " / 3 $\frac{1}{8}$ " | 2" | ETL 120 min / 1200° | Spy-Proof, Key-Locking Dial, ESL5, ESL10 | 5-Spoke | Gray Leather |
| | | RSC Level I | 4 $\frac{5}{8}$ " / 3 $\frac{1}{8}$ " | 2" | ETL 120 min / 1200° | Spy-Proof, Key-Locking Dial, ESL5, ESL10 | 5-Spoke | Gray Leather |
| | | RSC Level I | 4 $\frac{5}{8}$ " / 3 $\frac{1}{8}$ " | 2" | ETL 120 min / 1200° | Spy-Proof, Key-Locking Dial, ESL5, ESL10 | 5-Spoke | Gray Leather |
| | | RSC Level I | 4 $\frac{5}{8}$ " / 3 $\frac{1}{8}$ " | 2" | ETL 120 min / 1200° | Spy-Proof, Key-Locking Dial, ESL5, ESL10 | 5-Spoke | Gray Leather |
| | | RSC Level I | 4 $\frac{5}{8}$ " / 3 $\frac{1}{8}$ " | 2" | ETL 120 min / 1200° | Spy-Proof, Key-Locking Dial, ESL5, ESL10 | 5-Spoke | Gray Leather |
| | | RSC Level I | 4 $\frac{5}{8}$ " / 3 $\frac{1}{8}$ " | 2" | ETL 120 min / 1200° | Spy-Proof, Key-Locking Dial, ESL5, ESL10 | 3-Spoke | Gray Leather |
| | Lifetime Theft & Fire | RSC Level I | 4 $\frac{1}{4}$ " / 1 $\frac{1}{4}$ " | 11GA | ETL 90 min / 1200° | ESL10 Electronic Lock | 5-Spoke | Gray Fabric |
| | Lifetime Theft & Fire | RSC Level I | 4 $\frac{1}{4}$ " / 1 $\frac{1}{4}$ " | 11GA | ETL 90 min / 1200° | ESL10 Electronic Lock | 5-Spoke | Gray Fabric |
| | Lifetime Theft & Fire | RSC Level I | 4 $\frac{1}{4}$ " / 1 $\frac{1}{4}$ " | 11GA | ETL 90 min / 1200° | ESL10 Electronic Lock | 5-Spoke | Gray Fabric |
| | Lifetime Theft & Fire | RSC Level I | 4 $\frac{1}{4}$ " / 1 $\frac{1}{4}$ " | 11GA | ETL 90 min / 1200° | ESL10 Electronic Lock | 5-Spoke | Gray Fabric |
| | Lifetime Theft & Fire | B-Rate | 3 $\frac{5}{8}$ " / 3 $\frac{1}{16}$ " | 12GA | ETL 60 min / 1200° | ESL5 Electronic Lock | 3-Spoke | Gray Fabric |
| | Lifetime Theft & Fire | B-Rate | 3 $\frac{5}{8}$ " / 3 $\frac{1}{16}$ " | 12GA | ETL 60 min / 1200° | ESL5 Electronic Lock | 3-Spoke | Gray Fabric |
| | Lifetime Theft & Fire | B-Rate | 3 $\frac{5}{8}$ " / 3 $\frac{1}{16}$ " | 12GA | ETL 60 min / 1200° | ESL5 Electronic Lock | 3-Spoke | Gray Fabric |
| | Lifetime Theft & Fire | B-Rate | 3 $\frac{5}{8}$ " / 3 $\frac{1}{16}$ " | 12GA | ETL 60 min / 1200° | ESL5 Electronic Lock | 3-Spoke | Gray Fabric |
| | Lifetime Theft & Fire | B-Rate | 3 $\frac{5}{8}$ " / 3 $\frac{1}{16}$ " | 14GA | 30 min / 1200° | ESL5 Electronic Lock | 3-Spoke | Gray Fabric |
| | Lifetime Theft & Fire | B-Rate | 3 $\frac{1}{4}$ " / 3 $\frac{1}{16}$ " | 14GA | 30 min / 1200° | ESL5 Electronic Lock | L-Handle | Gray Fabric |



At American Security, we have been dedicated to providing quality security solutions to our customers since our establishment in 1946.

Additionally, American Security entered the Smart Safe market 10 years ago with CashWizard, securing two more patents for our Smart Safe technology. The CashWizard Smart Safe is the highest security depository safe of its kind on the market today and provides ultimate visibility into daily cash transactions via integrated cloud-based software that gives treasury and other management suites the ability to remotely manage money from anywhere in the world, 24 hours a day, 7 days a week.

At American Security, we believe that innovation is not just about creating new products but also improving existing ones. We continuously update our products to keep up with the latest technology and security standards, ensuring that our customers have the best possible experience with our products.

Our humble beginnings started with little more than a welder, lathe, and a desire to build strong safes. As we've grown, we've expanded our offerings to meet the changing needs of our customers. Through dedication and hard work, we have become a leading name in the security industry, providing a wide range of products and services, including our CashWizard Smart Safes.

Over the years, we've had the privilege to work with a diverse range of clients across various industries and have been recognized for our commitment to quality and excellence. At American Security, our core values guide us in everything we do. We are committed to providing the highest level of security solutions to our customers and continuously strive to innovate and improve our offerings.



American Security reserves the right to update products as necessary